

Worksheets to print out from [sofatutor.com](https://www.sofatutor.com)

Telling Time from Analog and Digital Clocks



- 1 Label the parts of the clock.
- 2 What's the time?
- 3 Which clock shows the correct time?
- 4 What time is it?
- 5 Match the same times.
- 6 What time is it?
- + with many hints, answer keys, and solution approaches for all tasks



The complete package, **including all tasks, hints, solutions, and solution approaches**, is available to all subscribers of [sofatutor.com](https://www.sofatutor.com)

Label the parts of the clock.

Put the labels into the correct spot.

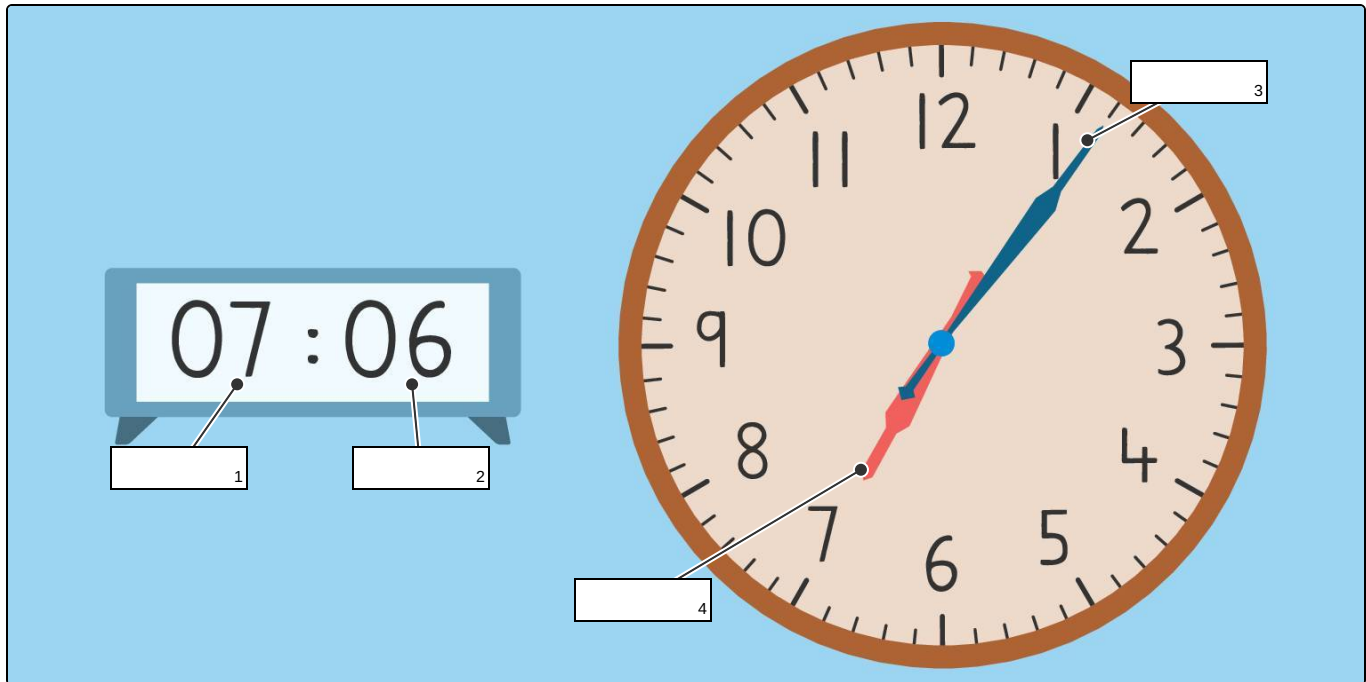
Zuri and Freddie need your help to identify the different parts of a digital and analog clock.

mintues

hour

hour

minutes



Our hints for the tasks



Label the parts of the clock.

1. Hint

For a digital clock, the hour is read first.

2. Hint

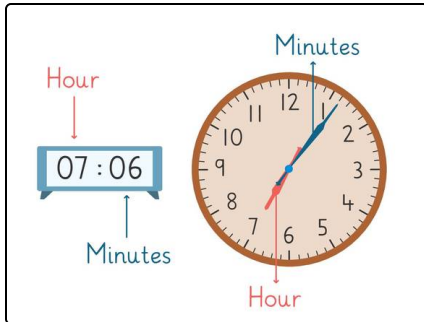
For an analog clock you need to count by ones or fives to read the minutes.

Solutions and solution approaches for the tasks

1
from 6

Label the parts of the clock.

Answer key: 1: hour // 2: minutes // 3: minutes // 4: hour



The **hour** on both clocks is **7** and the **minutes** on both clocks are **06**.

On a digital clock, to the left of the colon shows the **hour** and to the right of the colon shows the **minutes**.

On an analog clock, the shorter hand shows the **hour** and the longer hand shows the **minutes**.